

# PE/Cy5 Anti-Human CD25 (7G7B6) Monoclonal Antibody



天津三箭生物技术股份有限公司  
Tianjin Sungene Biotech Co., Ltd.  
精准 高效 稳定 Precision Efficient Stable

Catalog Number	Vial Size
H10253-35G	25 tests
H10253-35H	100 tests

<b>Market</b>	400-621-0003 marketing@sungenebiotech.com
<b>Support</b>	022-66211636-8024 techsupport@sungenebiotech.com
<b>Web</b>	www.sungenebiotech.com

**Important Note:** Centrifuge before opening to ensure complete recovery of vial contents.  
This product is guaranteed up to one year from purchase.

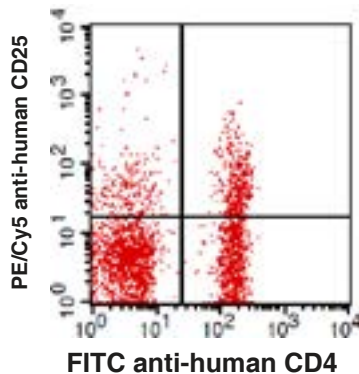
## Purified Antibody Characterization

Clone	Isotype	Reactivity
7G7B6	Mouse IgG2a	Human

## Description

CD25 is a 55 kD type I transmembrane glycoprotein also known as the low affinity IL-2 receptor  $\alpha$  chain or Tac. It is expressed on progenitor lymphocytes, activated T and B cells, and activated monocytes/ macrophages. CD25 is also expressed on a subset of non-stimulated CD4<sup>+</sup> T cells termed T regulatory cells. CD25 associates with the IL-2 receptor  $\beta$  (CD122) and common  $\gamma$  chains (CD132) to form the high affinity IL-2R complex.

## Illustration of Immunofluorescent Staining



Human peripheral blood lymphocytes stained with FITC anti-human CD4 and PE/Cy5 anti-human CD25

## Product Information

**Conjugation:** PE/Cy5

**Formulation:** PBS pH 7.2, 0.09% NaN<sub>3</sub>, 0.2% BSA

**Storage:** Keep as concentrated solution. Store at 4°C and protected from prolonged exposure to light. **Do not freeze.**

**Application:** Recommended Application: FC

**Usage:** Each lot of this antibody is quality control tested by immunofluorescent staining with flow cytometric analysis (The amount of the reagent is suggested to be used from 20  $\mu$ L to 5  $\mu$ L per 100  $\mu$ L of peripheral blood. Please check your vial). Since applications vary, the appropriate dilutions must be determined for individual use.

## References

- [1] Taniguchi T, et al. 1993. Cell 73:5.
- [2] Waldmann TA. 1991. J. Biol. Chem. 266:2681.
- [3] Read S, et al. 2000. J. Exp. Med. 192:295.

**For Research Use Only.**